

PACKING LIST

overnight camp edition



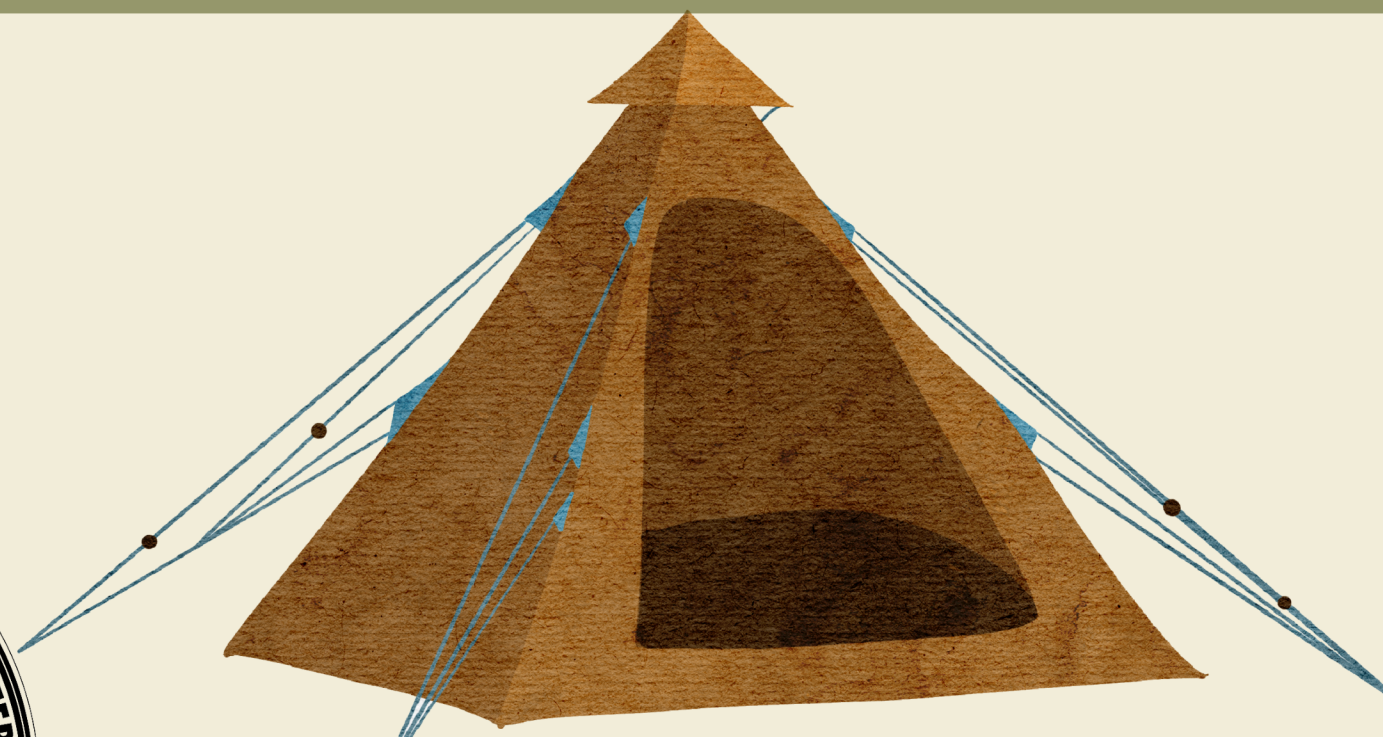
THE ESSENTIALS

- T-Shirts
- Long-sleeved shirt
- Shorts
- Comfortable pants
- Underwear
- Jacket/sweatshirt
- Socks
- Swimsuits
- Pajamas
- Poncho/raincoat
- Water shoes
- Closed toe shoes for running
- Shower shoes
- Pillow
- Sleeping bag
- Twin sized sheet & blanket
- Bath towel & washcloth
- Beach towel
- Reusable water bottle
- Flashlight or headlamp
- Toiletries - shampoo, conditioner, face wash, body wash, deodorant, toothbrush, toothpaste
- Bug spray
- Medications - these must be in original containers
- Laundry bag



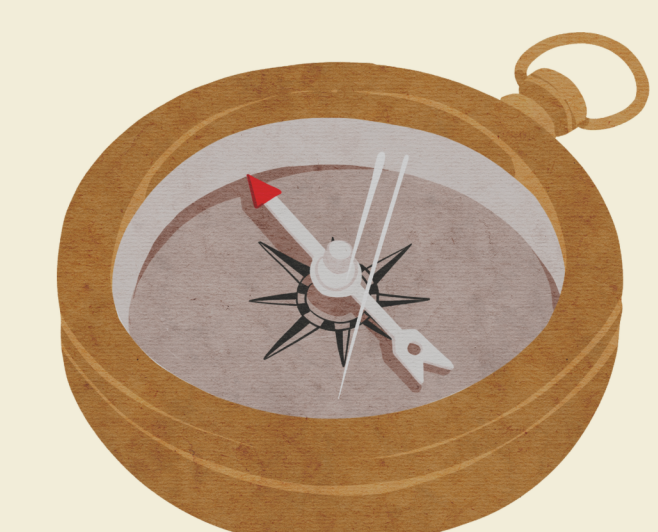
OPTIONAL ITEMS

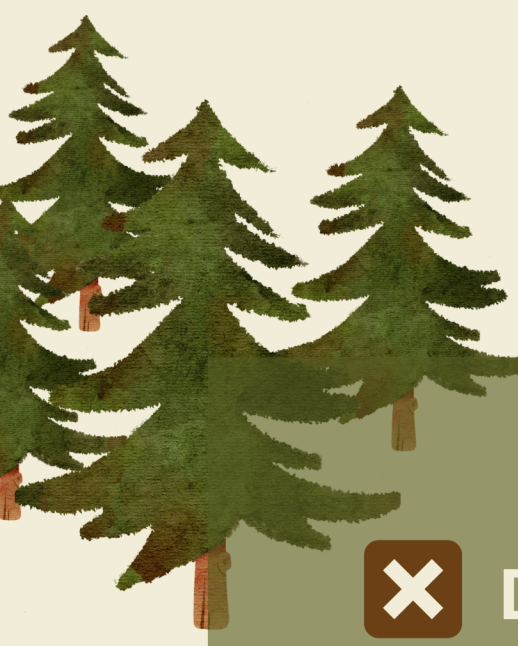
- Non-digital camera
- Letter writing supplies
- Watch
- Bible & BCP
- Shower caddy
- Hiking boots
- Small backpack
- Bandana
- Musical instrument



PLEASE LABEL EACH ITEM WITH THE CAMPER'S NAME

Camp Chickagami is not responsible for lost, stolen or otherwise damaged items that are brought to camp. Lost and found items are collected and displayed each day during camp.





PACKING LIST

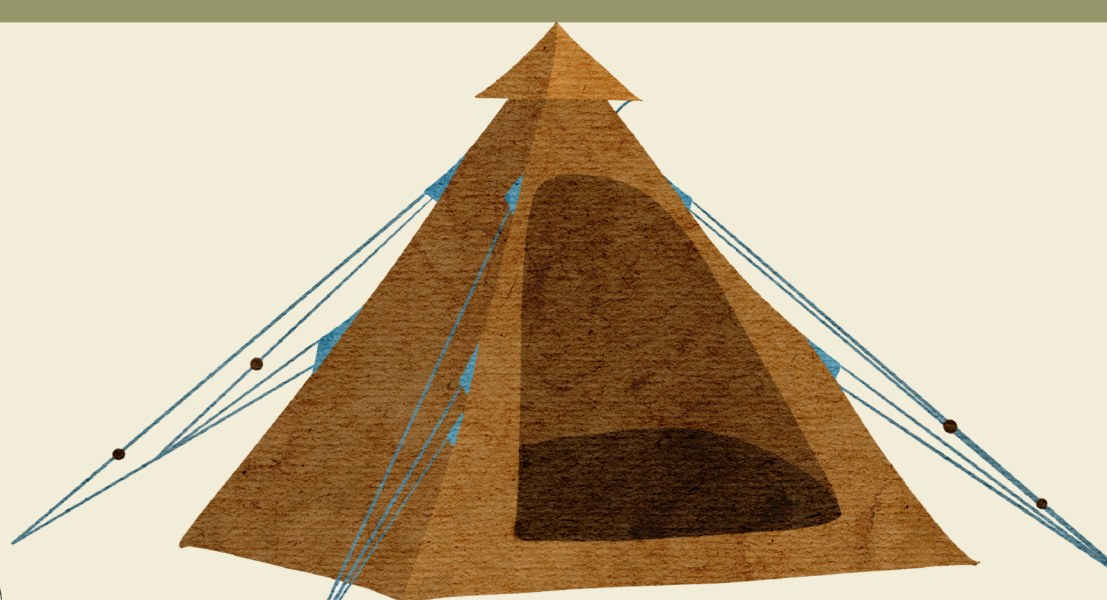
overnight camp
prohibited items & policies edition

LEAVE THESE AT HOME, PLEASE.

- ✘ Digital camera
- ✘ Radio/speakers
- ✘ Matches & lighters
- ✘ Tablet
- ✘ Cellphone
- ✘ Snacks, food & gum
- ✘ iPod/Music Players

CAMP POLICIES

- Camp Chickagami is a drug-free facility.
- The possession and use of alcohol is not permitted while at Camp Chickagami.
- Camp Chickagami prohibits the possession and control of weapons, firearms, and dangerous devices while on Camp Property or as a part of a Camp Program.
- To protect the safety and welfare of guests and camp personnel, camp authorities may search a guest, guest use areas, or guest automobiles, and may seize any illegal, unauthorized, or contraband materials discovered in the search. The Camp Director or another staff person designated by the Camp Director may request authorization for a search or conduct an emergency search when a threat to staff or guest is deemed imminent. If a properly conducted search yields illegal or contraband materials, such findings shall be turned over to proper legal authorities for ultimate disposition.
- Camp Chickagami is not responsible for lost or stolen items.
- Equipment for all programs offered on site by Camp Chickagami will be provided by Camp Chickagami. If off-site, vendors may be utilized for specialized equipment.
- Pets are allowed on the property on a case-by-case for staff and volunteers at the discretion of the Camp Director.
- Smoking and vaping are prohibited at Camp Chickagami.
- Use of vehicles at the Facility is restricted to roads and parking areas designated by camp staff.



QUESTIONS? EMAIL DIRECTORS@CAMPCHICKAGAMI.ORG

Camp Chickagami is not responsible for lost, stolen or otherwise damaged items that are brought to camp. Lost and found items are collected and displayed each day during camp.

